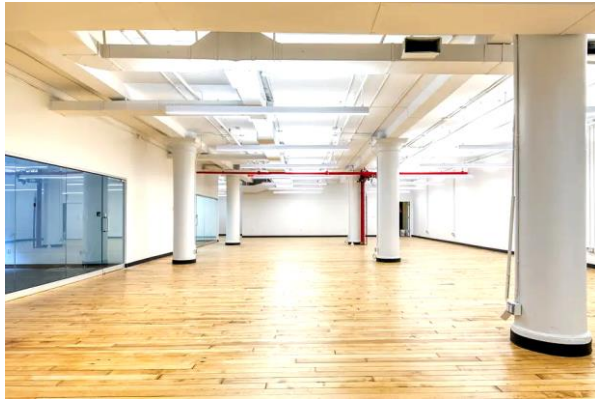


22 West 21st Street (Between Fifth Avenue and Sixth Avenue)

Flatiron Full Floor Loft Office Space for Rent



Open Work Area



Wet Pantry

Jonathan Anapol

President

Prime Manhattan

Direct: 212-268-8289

Mobile: 917-439-4225

E-mail: janapol@primemanhattan.com

Office Space Features:

Full Floor Identity

Entire 3rd Floor 5,430 SF.

Asking Rent: \$39.00 per ft.

Term: 1 to 10 Years

- (1) Private Windowed Office
- (1) Meeting Room
- (2) Conference Rooms
- (1) Open Area can seat 45 Staff
- Wood floors, Exposed Ceilings, and Spacious and a Wet Pantry

The following available commercial space offers a clean palette configured into a rectangular loft space. This rental presents a great option for those who required a new open professional space today.

Highlights

- Newly Updated Attended Building Lobby
- 24/7 Building Access
- (2) Passenger Elevators
- (2) Freight Elevators
- On-site Building Maintenance
- Property in the heart of Flatiron
- Easily accessible by B, D, F, M, R, W Subways, and access to the PATH Train
- Conveniently located <5 min walk from Madison Square Park
- Plethora of lunch and coffee spots nearby including by Chloe, Lenwich, Juice Press, Eataly, Boqueria, Gotham Coffee Roaster, and Maison Kayser.



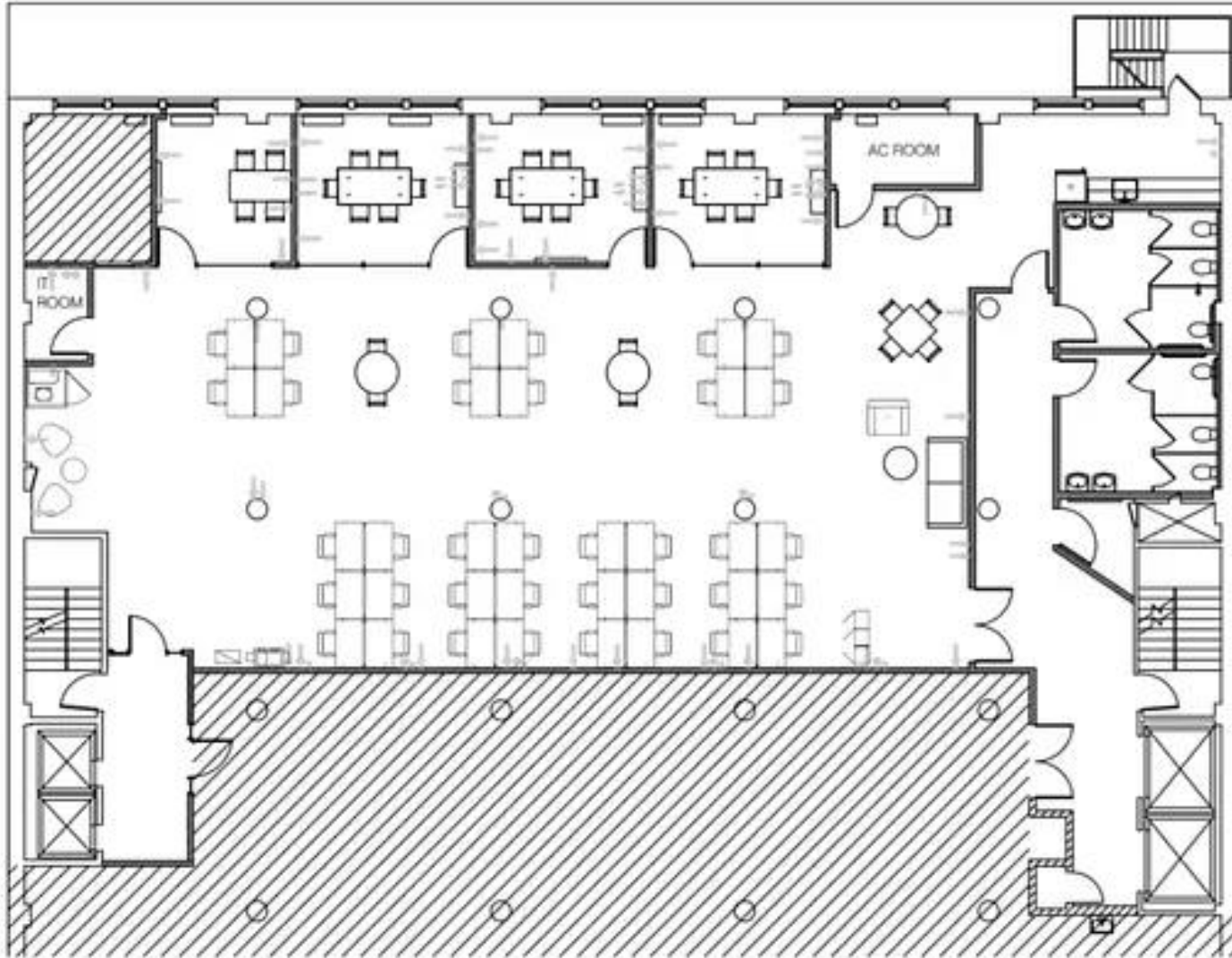
Front Area



Open Work Area

22 West 21st Street (Between Fifth Avenue and Sixth Avenue)

Flatiron Full Floor Loft Office Space for Rent



22 West 21st Street (Between Fifth Avenue and Sixth Avenue)

Flatiron Full Floor Loft Office Space for Rent

