

375 Park Avenue Seagram Building

Exclusive Sublease Listing Perfect for Chairman's / CEO / Family Office 37th fl. NW Corner



Chairman's Corner Office

Exclusive Sublease Listing

375 Park Avenue – Seagram's Building
Perfect for Chairman's / CEO / Family Office

Sq. Ft. - 2,941
Premise - Partial 37th Floor
Term - Through September 29, 2026
Possession - Immediate
Leasing Rate - Upon Request

An exclusive corner unit located on the 37th of 38 floors at the world renown Seagram Building. This office space faces Park Avenue to the west, with views up Park Avenue to the North. Above standard high end custom buildout, 100% move in ready, furniture can be made available.

The unit features a double glass door entrance and spacious reception area with white marble floors. The large board room overlooks Park Avenue and the Seagram's Building fountains and plaza.

The large executive corner office offers eight floor-to-ceiling windows showcasing spectacular views facing Park Avenue and north up Park Avenue. The office also has an adjoining private bathroom. The second large executive office looks down on the Seagram Building Park Avenue plaza. The work station area will accommodate 2 people. There is a large interior room for file / storage, with a full size pantry, full size Refrigerator, microwave & dishwasher.

The combination of the world famous Seagram Building, views from the 37th floor, the exquisite custom built installation, make this office one of the top choices in all of New York City.

This landmark building property stands 515 feet (157 m) tall, a modernist masterpiece of architecture. The property today attributes its enduring appeal to its world renown architectural features, robust infrastructure, famous fountains and plaza and the Park Avenue location.



Boardroom with Unencumbered Views



Reception with Guest Seating



Seagram's Building Plaza

Jonathan Anapol
President
Prime Manhattan Realty
Direct: 212-268-8289
Mobile: 917-439-4225
E-mail: janapol@primemanhattan.com

375 Park Avenue Between 52nd and 53rd Streets

Exclusive Sublease Listing Perfect for Chairman's / CEO / Family Office 37th fl. NW Corner



Chairman's Corner Office Picture



Park Avenue (Plaza District)



Partner's Private Office



Staff Workstation



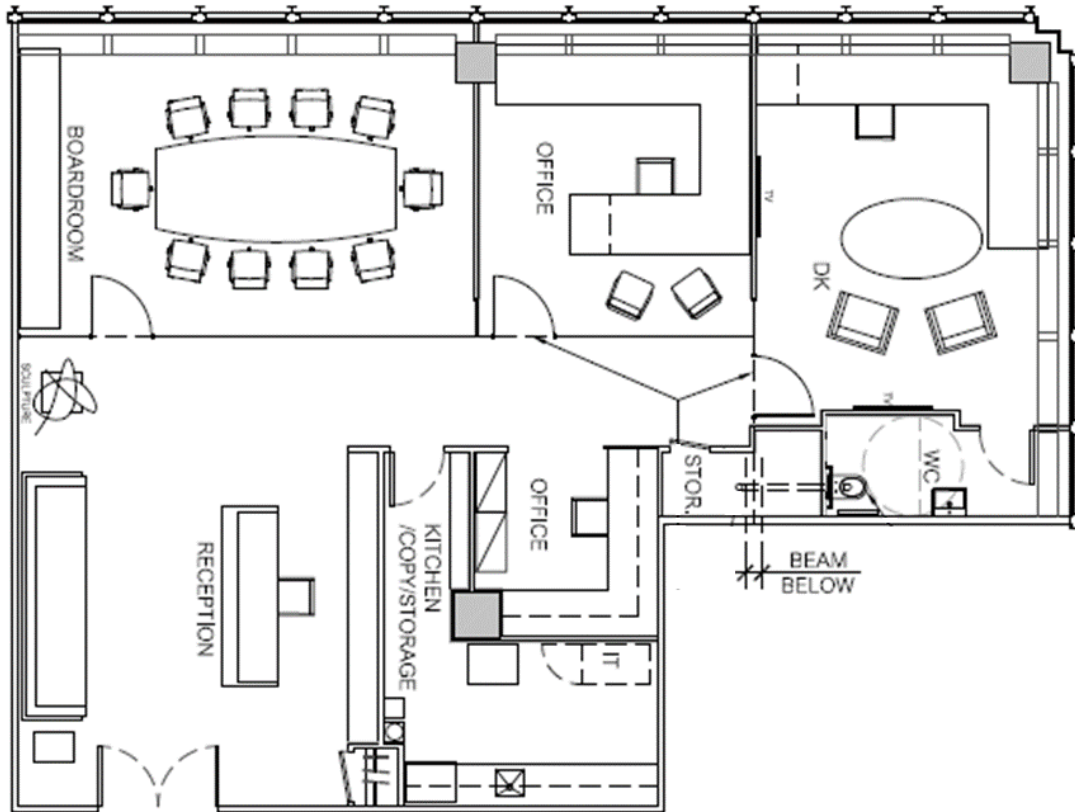
Office Pantry

375 Park Avenue

Between 52nd and 53rd Streets

Exclusive Sublease Listing Perfect for Chairman's / CEO / Family Office 37th fl. NW Corner

PARK AVENUE



EAST 53rd STREET

375 Park Avenue Between 52nd and 53rd Streets

