



Bryant Park / Penn Station

UNIT SIZE: 7447 SF.

FLOOR: 3rd

PRICE: \$48 PSF.

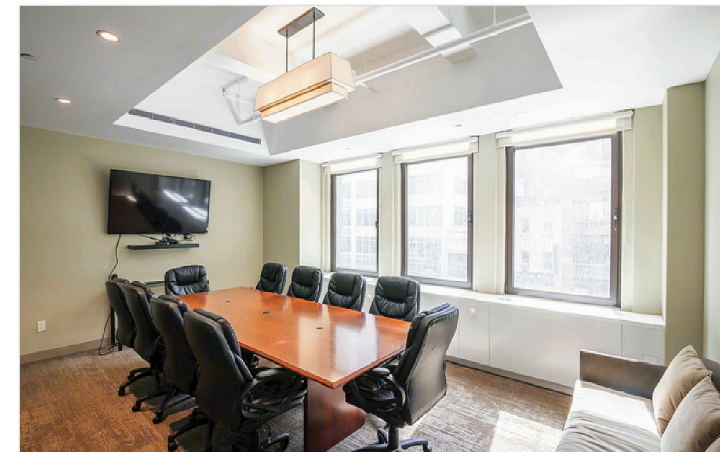
POSSESSION: Immediate

TERM: July 30th, 2028

Space Features

- 7,447 SF. Corner Unit, Abundant Light
- Modern buildouts with windows on three sides offers excellent natural light.
- Built corner unit offering abundant natural light and featuring;
(9) Windowed Offices, (3) Interior Offices, (2) Conference Room, Wet Pantry With Eating Area, Open Area, Reception Area, Private Restrooms, Tenant-controlled A/C, And New Operable, Tilt & Turn Windows
- Existing Furniture Possibly Available
- 2028 lease term is available, providing your businesses with a stable and very impressive image in the coming years
- Key Card Building Entry
- 24/7 Attended Access
- Times Square, Penn Station, Grand Central Terminal, Herald Square & Bryant Park transportation; A, C, E, 1, 2, 3, B, D, F, M, 7, N, Q, R, W
- Near new Amazon and Facebook offices among other prominent companies.
- Northwest Corner of West 37th Street

In total this pre-built office offers a potential tenant the ability to maintain their momentum during their moving of offices; this 3rd floor unit comes pre-built and offers furniture!



Jonathan Anapol
President
Prime Manhattan Realty

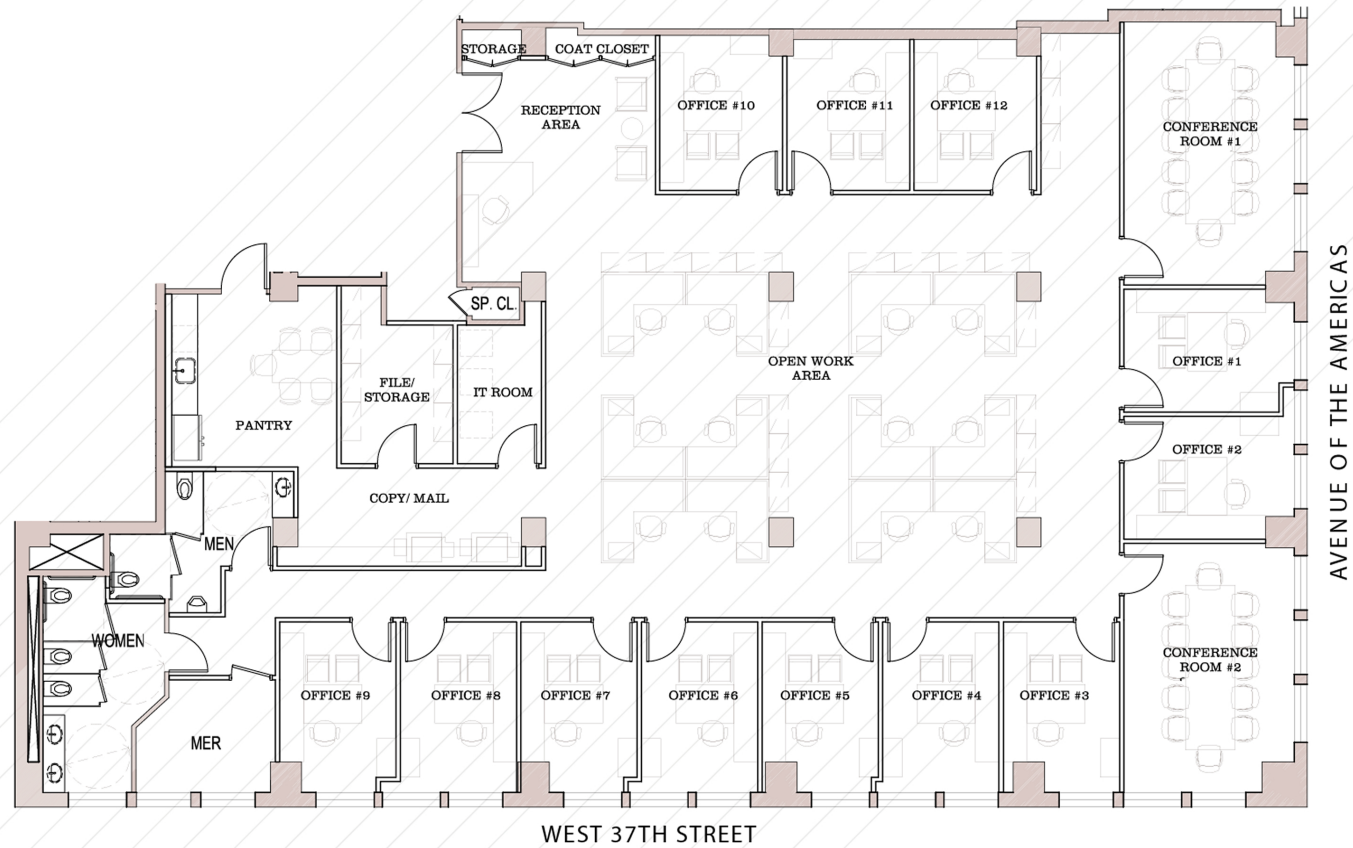
DIRECT: 212-268-8289

MOBILE: 917-439-4225

E-MAIL: janapol@primemanhattan.com

SUITE 301 - 7,447 RSF
(AS BUILT)

1001 Sixth Avenue 3rd Level - Office Floor Plan



Not to scale, for display purposes only

1001 Sixth Avenue

Office Sublet Rental

37th & 38th Streets

