

115 East 57th Street

Plaza District

Medical Space For Lease



Building Property Entrance



Patient Waiting Area

Jonathan Anapol

President

Prime Manhattan

Direct: 212-268-8289

Mobile: 917-439-4225

E-mail: janapol@primemanhattan.com

Shared Medical Office for 1 or 2 Physicians Partial Sixth Floor Office

Ideal medical office space with experienced Internist in a professional setting.

Type: Sublease (Physician Shared Office with Internist)

Term: 1 to 4 ½ Years

Possession: Immediate

Rent: Upon Request

Potential Uses: Any

Features

- For 1 or 2 Physicians
- (1 to 2) Private Office / Consultation Room
- (2 or 4) Exclusive use of two Exam Rooms
- (1 to 2) Position for Doctor's Assistant
- (1) Position for Receptionist / Bookkeeping
- Modern Building
- Additional Second Lobby ADA Access from 58th Street
- Move-in Condition; recently upgraded
- 24/7 Access
- Attended Lobby
- Rent includes; Heat, Water, Cleaning
- Renovated Common Areas
- High-Speed Internet
- Convenient Subway Access (4, 5, 6, E, M, N, Q, R)

Located in a Top Class A Medical Office Building located between Lexington and Park on 57th Street.



Exam Room



Exam Room

115 East 57th Street

Plaza District

Medical Space For Lease



Through Hallway



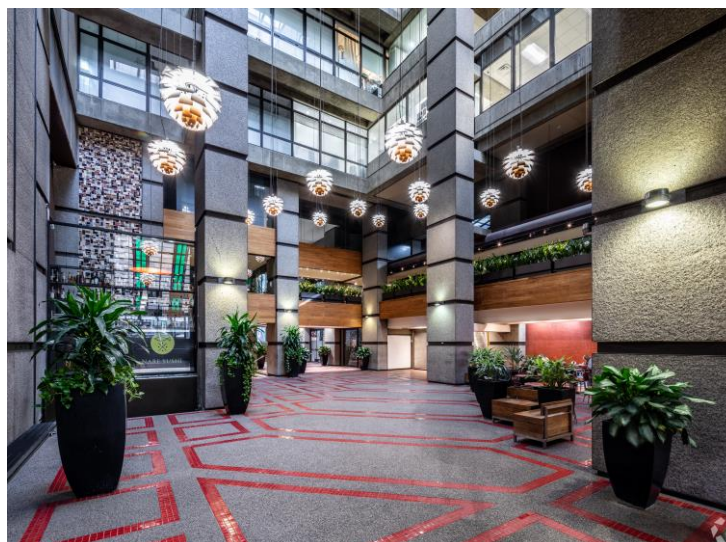
Private Windowed Office



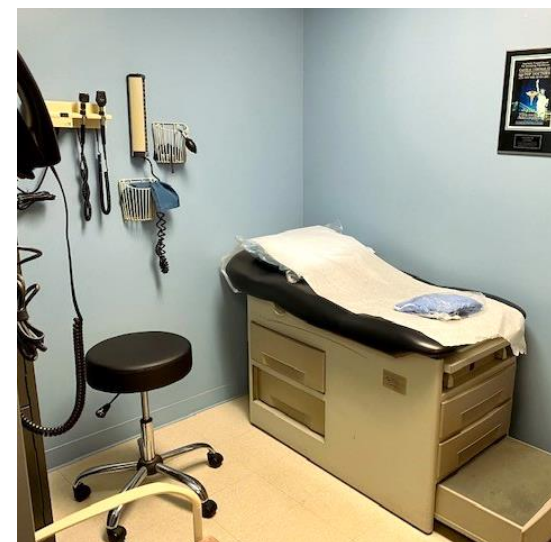
Reception Front Desk



Exam Room



115 East 57th Building Lobby



Exam Room

