



Flatiron District / Manhattan

UNIT SIZE: 6,100 SF.

FLOOR: 21st

PRICE: Upon Request

POSSESSION: Immediate

TERM: 5 to 20 Year

Your white boxed office space canvass is ready for you to design and build, or to have the landlord build for you.

Office Plan (Intensive Layout)

- Two (2) CEO/senior executive windowed offices
- Twelve (12) executive windowed offices
- Two (2) large conference rooms seating ten (10) to sixteen (16) people
- Bullpen seating eight people in clustered workstations, or twelve (12) people using bench tables

Open Plan (High Density Seating)

- One (1) CEO/senior executive windowed office
- Three (3) executive/managerial windowed offices
- One (1) large conference room seating sixteen (16) people
- Bullpen area seating 50 to 60 people

Common Features (both office layouts)

- New kitchen with modern above-standard fixtures and cabinetry, and an open dining area
- Large Reception that can seat four (4) people in the waiting area
- IT Closet; telephone & data outlets will be delivered throughout the private offices and open bullpen area for easy wiring



William McCollum
Senior Managing Director
Prime Manhattan Realty

DIRECT: 212-268-8290

MOBILE: 347-316-6852

E-MAIL: wmcollum@primemanhattan.com

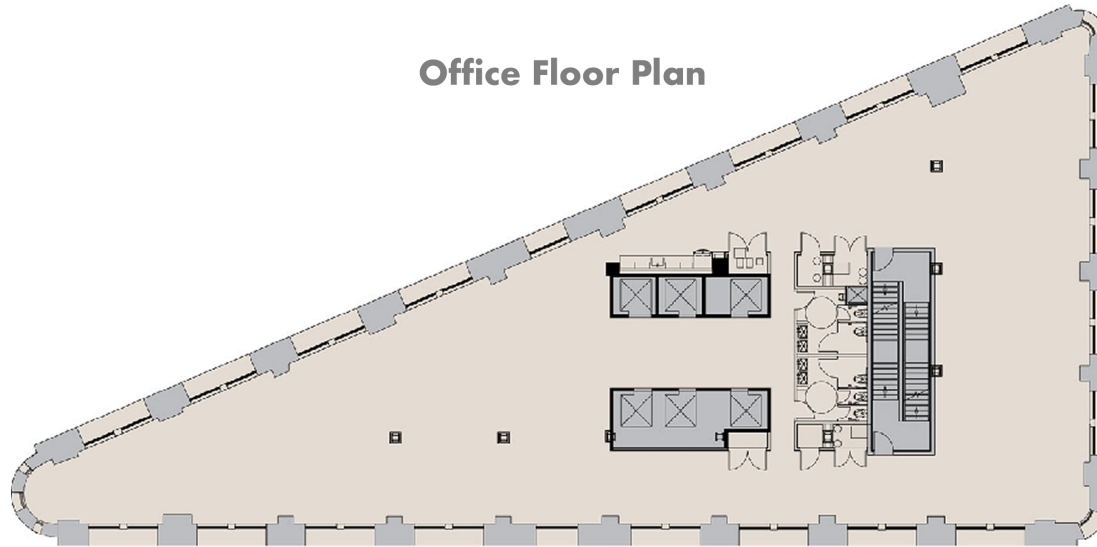
Jonathan Anapol
President
Prime Manhattan Realty

DIRECT: 212-268-8289

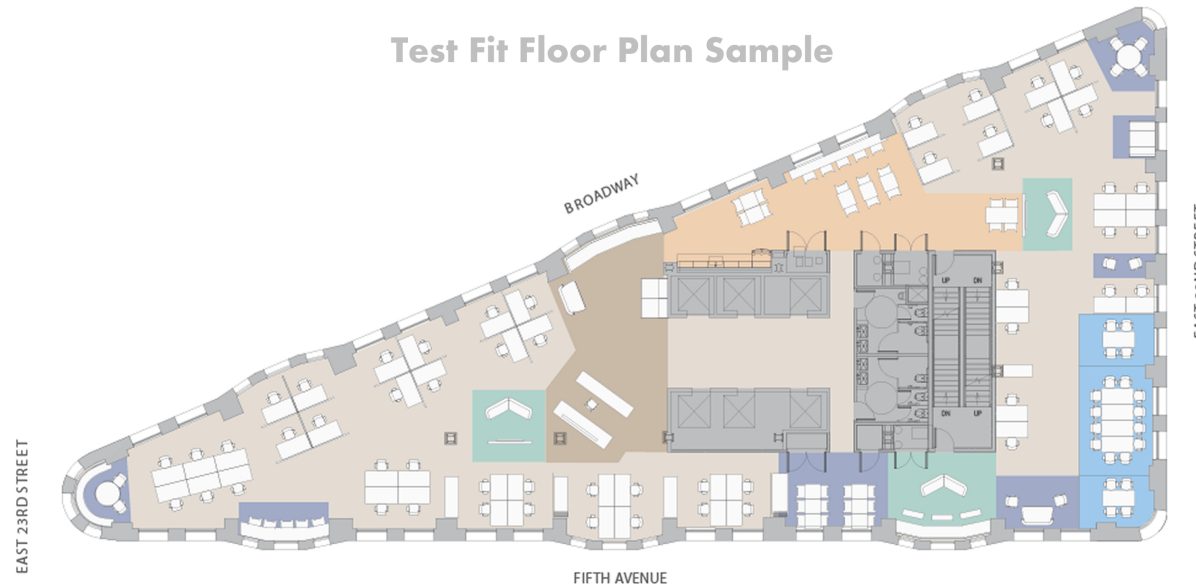
MOBILE: 917-439-4225

E-MAIL: janapol@primemanhattan.com

Office Floor Plan



Test Fit Floor Plan Sample



175 Fifth Avenue

Flatiron Building Office Space

23rd Street

