

# 263 West End Avenue – between 71<sup>st</sup> & 72<sup>nd</sup> Streets

Medical Cooperative for Sale



Private Office



Private Office

**Stanley J. Piesh**  
**Managing Director**  
**Prime Manhattan**  
**Direct: 212 594 7354**  
**Mobile: 917 282 8590**  
**E-mail: [spiesh@primemanhattan.com](mailto:spiesh@primemanhattan.com)**

Upper West Side  
**Unit Size: 1,021 SF.**

**Possession: Immediate**  
**Maintenance including RE Tax: \$3,041 Monthly**  
**Asking Price: \$900,000**

[VIEW VIRTUAL TOUR HERE](#)

Amazing West side location ground floor medical co-op for sale in white glove 24/7 doorman building. Currently used as three psychotherapy suites. Space could be rebuilt into any medical practice. Existing layout provide for 2 bathrooms and additional vet columns for sink installations.

Very affordable monthly maintenance charge covers real estate tax, doorman as well as building's upkeep. West End Avenue location cannot be any better, it provides elegant prewar charm of the west side as well easy access to public transportation just one block from 72nd Street subway stop of express lines 2 and 3 train and number 1 local train connecting this location to downtown as well as to Brooklyn. Elegant building with 22 floors and 125 apartments constructed in 1929 it is well kept and reflect the prewar charm with spacious well light lobby.

## Features

- Distinguished pre-war building known as Riverside Towers is West End Avenue's longest established co-op.
- Located just one block from Riverside Park and near Fairway, Trader Joe's, and Citarella.
- Transportation nearby via; M72, M57 and M5 bus lines across the street and the express stop for subway lines 1,2 & 3 just one block away.



Reception



Private Office

# 263 West End Avenue – between 71<sup>st</sup> & 72<sup>nd</sup> Streets

Medical Cooperative for Sale



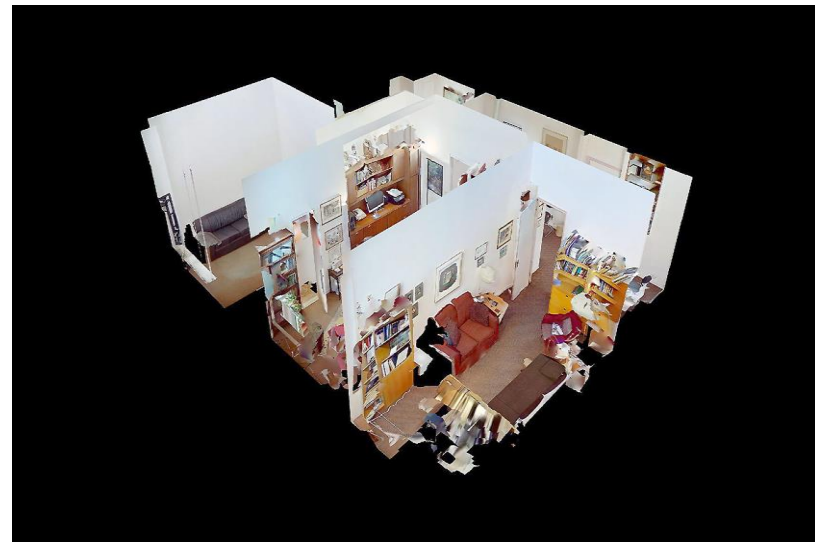
Reception Area



Glass Partitioned Entrance



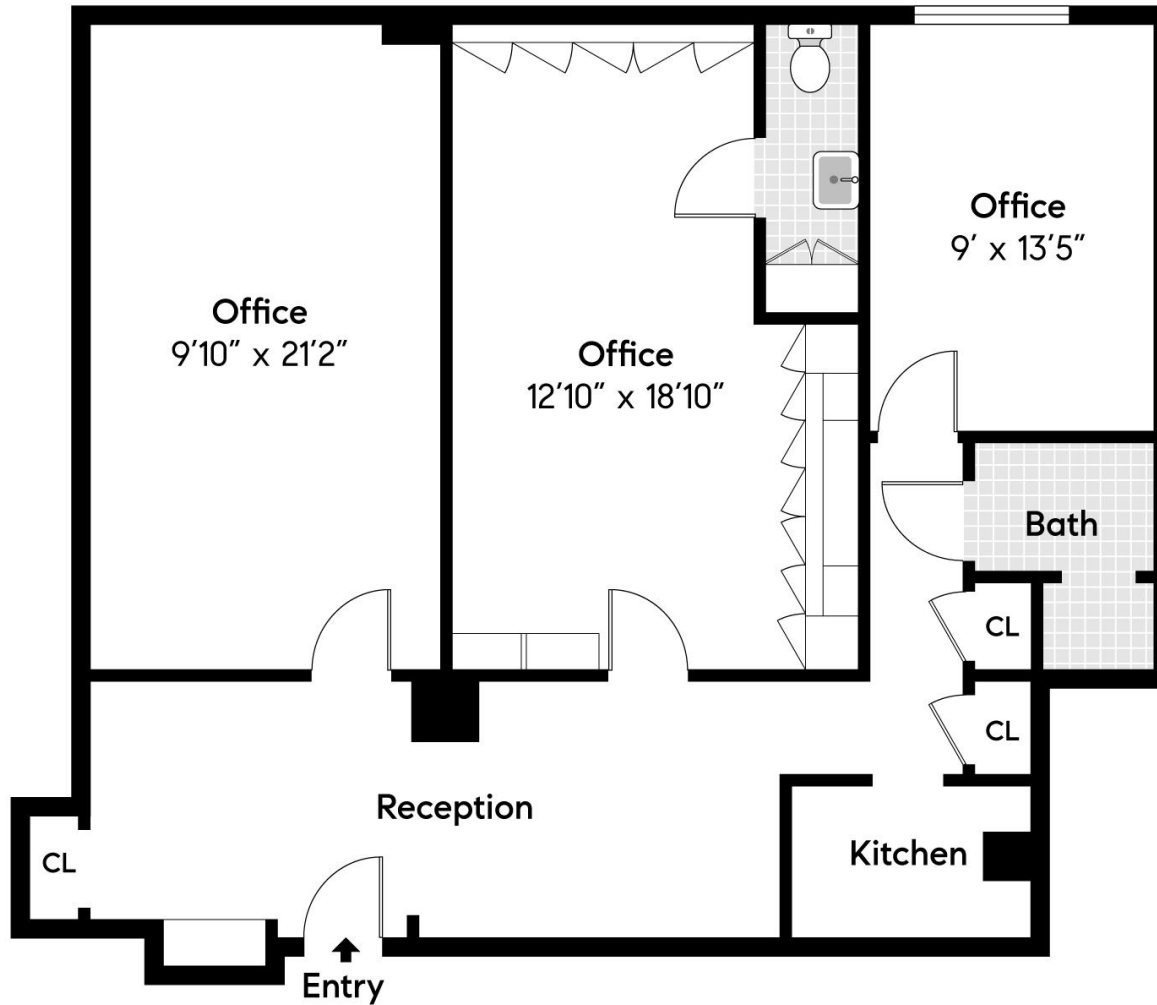
Private Office



Unit Dollhouse View

# 263 West End Avenue – between 71<sup>st</sup> & 72<sup>nd</sup> Streets

Medical Cooperative for Sale



Total Int: 1021 ft<sup>2</sup>

263 West End Avenue Suite 1



# 263 West End Avenue – between 71<sup>st</sup> & 72<sup>nd</sup> Streets

Medical Cooperative for Sale

