

280 Park Avenue

Midtown Full Floor Office

Between 48th & 49th Streets



Manhattan

UNIT SIZE: 9000

FLOOR: 24th

PRICE: Upon Request

POSSESSION: Immediate

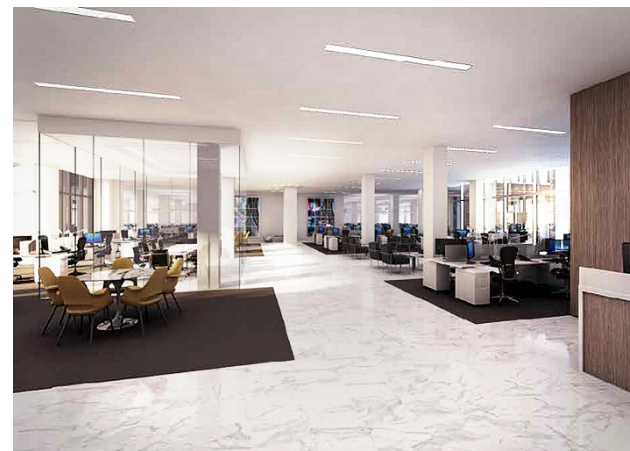
TERM: Negotiable

This Move in Ready 9,000 Square Foot office is a furnished commercial sublet space contained within as a Class A Office. Configured into an Open Plan Layout - this unit contains a number of private windowed offices which breakdown as follows; (5) executive offices and (1) Principal's office + open work area with (24) workstations.

Space Features

- Pre-Built Office Space (Sublet); currently built as
- (1) CEO/Senior Executive Windowed Offices
- (5) Executive Windowed Offices
- (1) Large Conference Room featuring AVS/Flat Screen&
- (24) Workstations w/ good quality chairs (Soft Seating)
- Open Pantry + Large Red Oak Wood Dining Table
- Superb High floor with Breathtaking Impressive Views
- Class-A Office Tower
- 24/7 Building Access

This awesome Midtown East Office Space features an Office Build-out and Interior Design by Fogarty Finger Architects of New York, which has performed high-end office design for Rockefeller Center Group, 520 Madison Avenue, Two Grand Central Tower and Boston Properties Group.



William McCollum
Senior Managing Director
Prime Manhattan Realty

DIRECT: 212-268-8290

MOBILE: 347-316-6852

E-MAIL: wmccollum@primemanhattan.com

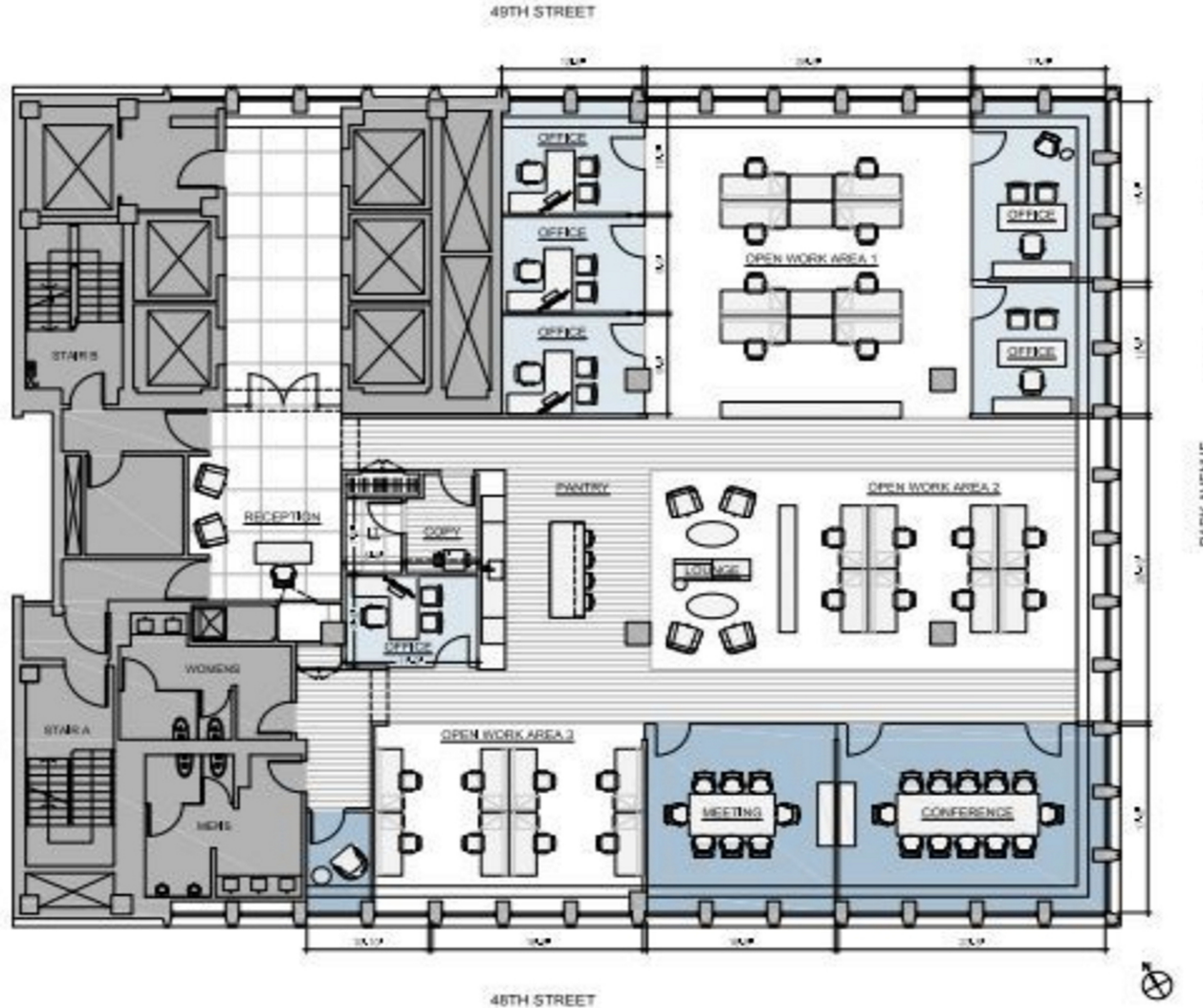
Jonathan Anapol
President
Prime Manhattan Realty

DIRECT: 212-268-8289

MOBILE: 917-439-4225

E-MAIL: janapol@primemanhattan.com

280 Park Avenue 24th Floor Office Sublet



280 Park Avenue

Midtown Full Floor Office

Between 48th & 49th Streets

