

Live / Work condo for Sale or Lease

119 West 22nd Street, Chelsea, NYC



*Exclusive listing

Transportation:



Jonathan Anapol
Mark Roopchan

Janapol@primemanhattan.com
mroopchan@primemanhattan.com

212.268.8289
646.460.9384

Live / Work Condo for Sale or Lease

Square Feet: 3,850

**Floors: Ground Level + Lower Level 18'
Ceiling height**

For Lease : \$44 per sq. ft.

For Sale: \$2,950,000

Taxes: \$37,851 Maintenance: \$1404/MO

Space Notes:

- Newly renovated space
- 3 Bedroom/ Office
- 2 full bathrooms
- Full kitchen with washer and dryer plumbing
- Glass Mezzanine
- 18 Foot Ceiling / floor to ceiling windows
- 3 office workstations

Potential Use Groups:

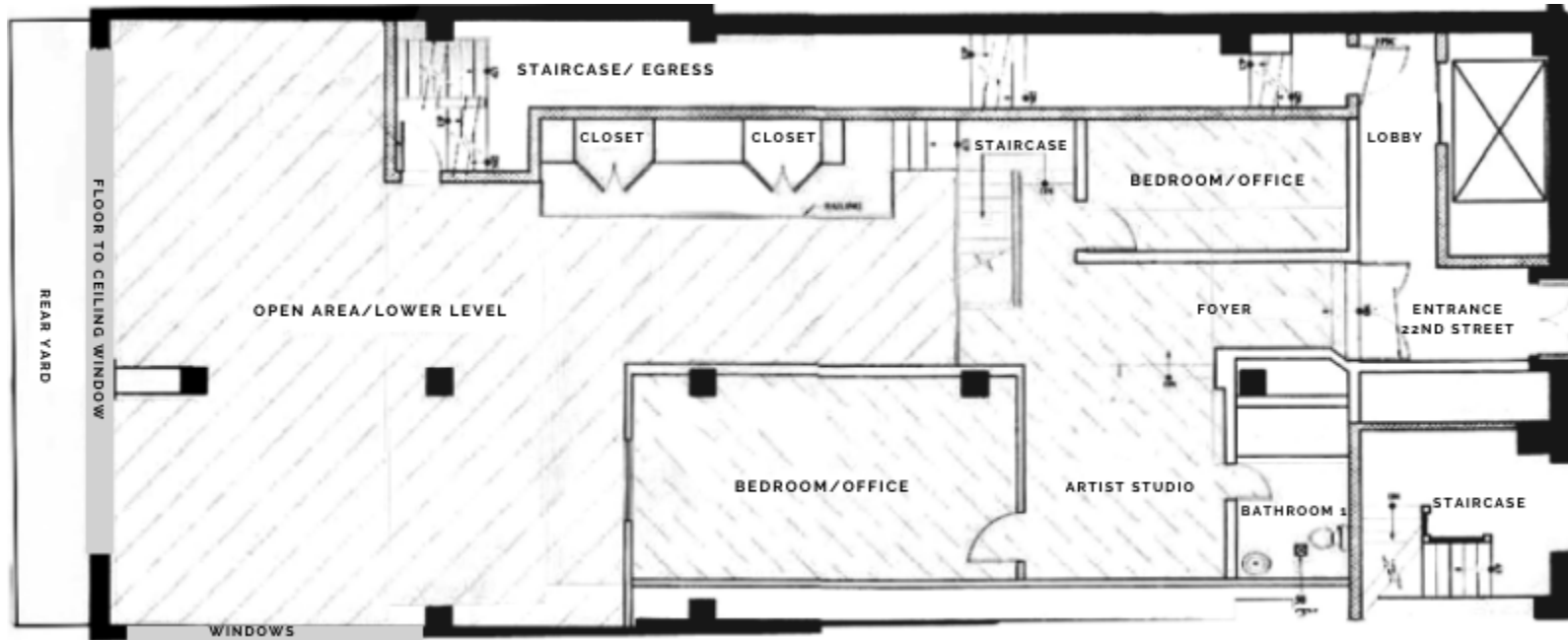
Art studio, Artist work shop,
Media/ Marketing firms, Technology
firm, Wellness/ health studio/ Spa/ Yoga/
Pilates/ Martial Arts

Neighbors:

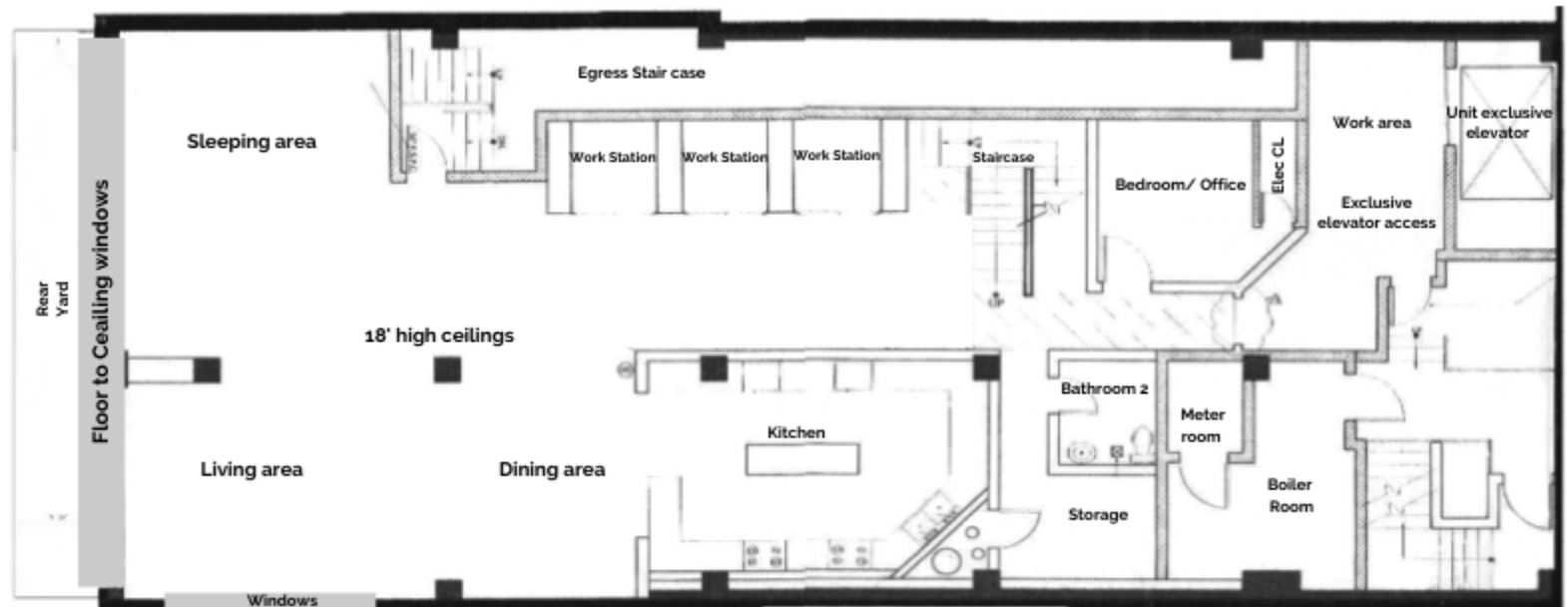
Best Buy • Trader Joe's • Eataly Markets
• Madison Square Park • Fashion Institute of
Technology • Home Depot • Starbucks

Live / Work condo for Sale or Lease

119 West 22nd Street, Chelsea, NYC



Upper Level



Lower Level

Live / Work condo for Sale or Lease

119 West 22nd Street, Chelsea, NYC

