

66 White Street

Two-Floor Condo

Church & Broadway



Tribeca

SIZE: 7,998

FLOOR: 5th + 6th

PRICE: \$11,500,000

POSSESSION: Immediate

COMMON CHARGE: \$5,597

TAXES: \$5,962

Two-Floor Condo with outdoor space - spanning 7,998 SF. of commercial loft space configured into an office unit. This condo's two floors separate the work and entertaining portions of the levels - making for a modern and luxurious space. This commercial condo's selection of materials and inspired interior design, preserve and celebrate all the charm, character and history of a landmark edifice while creating the perfect modern loft experience.

- Fifth Floor 5,012 RSF.

- Sixth Floor 2,986 RSF.

Space Features

- (7) Private Offices + (2) Executive Offices
- Bull-Penn (seats 12)
- Kitchen with Bar Seating
- Move-In Condition* (with all wiring in place)
- Can be delivered Vacant
- High-End, Beautifully Constructed Installation
- Discreet Keyed-Elevator Entry
- Outdoor Space with south-facing Terrace

*The existing furniture and equipment can be included



Jonathan Anapol
President
Prime Manhattan Realty

DIRECT: 212-268-8289

MOBILE: 917-439-4225

E-MAIL: janapol@primemanhattan.com

66 White Street

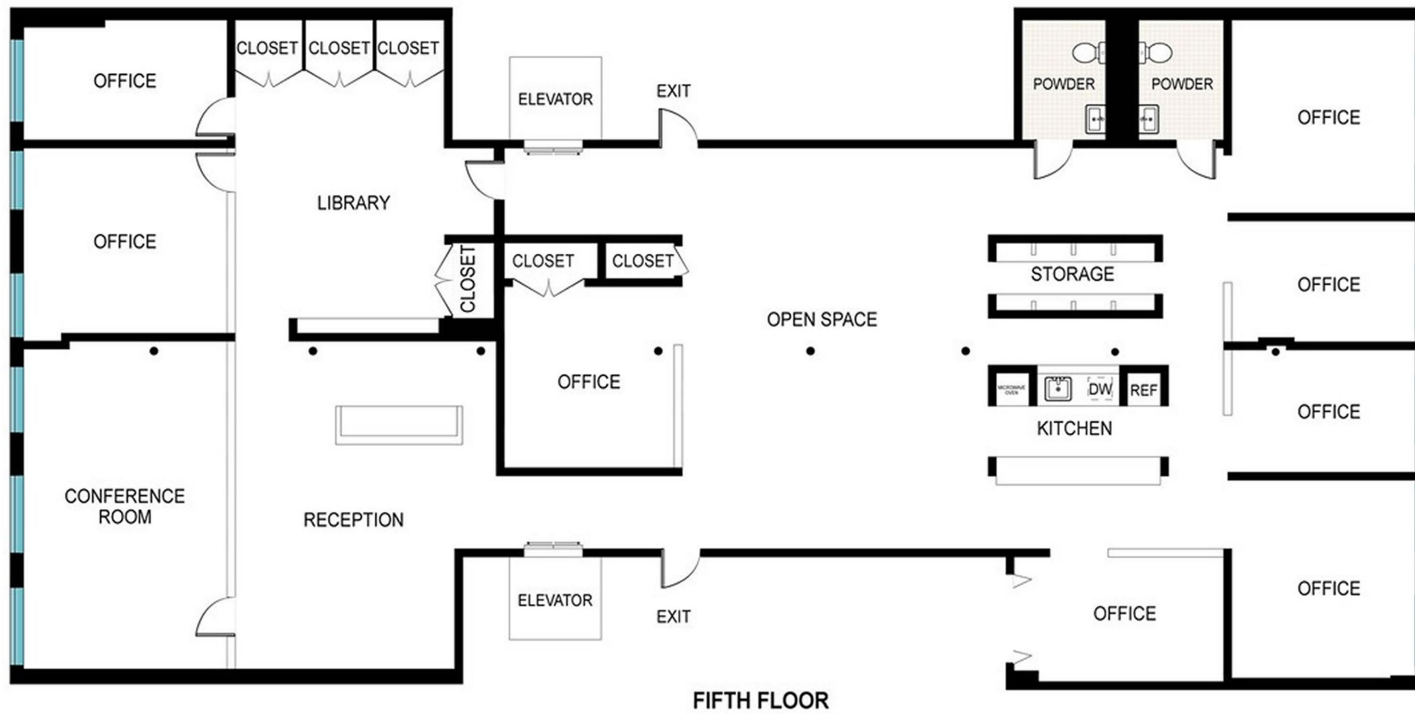
Two-Floor Condo

Church & Broadway



66 White Street

Fifth Floor Unit



Scale in feet. Indicative only. Dimensions are approximate. All information contained herein is gathered from sources we believe to be reliable. However, we cannot guarantee its accuracy and interested persons should rely on their own inquiries.



Scale in feet. Indicative only. Dimensions are approximate. All information contained herein is gathered from sources we believe to be reliable. However, we cannot guarantee its accuracy and interested persons should rely on their own inquiries.

66 White Street

Two-Floor Condo

Church & Broadway

